



The Record

Volume 135

December 1, 2022

Number 48

Beyond the Wild Blue Yonder

By Dr. Jim Haas

What a year it's been for NASA!

When my parents were born in 1920, flying machines were novelties made mostly of wood and fabric. Now, only a hundred years later, sleek rockets travel to other worlds and an ingenious telescope sees the universe as it was shortly after The Beginning and studies the atmosphere of planets circling distant suns.

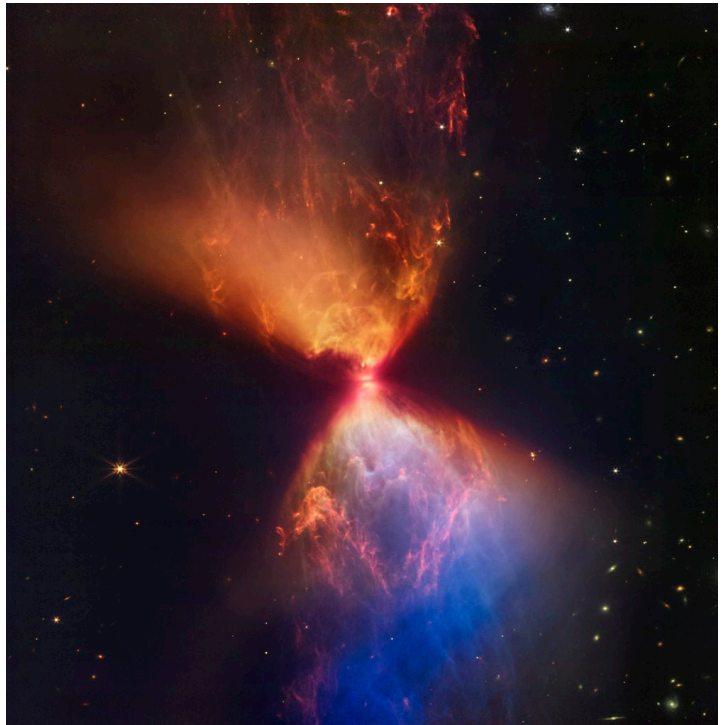
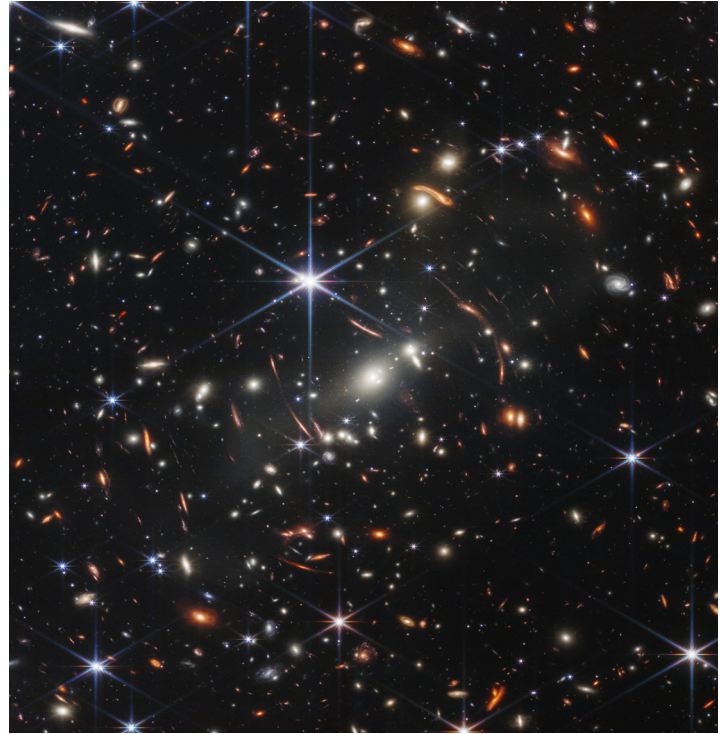
After last December's launch, final adjustments were made to the James Webb Space Telescope a million miles from our distorting atmosphere and orbiting the Sun at the same pace we are. The Webb has been sending astonishing pictures of the farthest, and therefore oldest, objects yet seen. Pictured is a new image showing a tiny part of the universe (the size of a grain of sand held at arm's length) with its oldest objects as they were 14 billion years ago, fewer than a billion years after the Big Bang. The nearly vertical object in the upper left corner with a faint ring around it is the earliest galaxy yet seen just taking shape.

The other image is of a new star forming from clouds of cosmic dust. The bright pink line where the clouds meet in the center is a disc that will expand to become the star.

Another NASA achievement was the DART experiment sending a rocket to crash into a small asteroid to see if the collision could change the asteroid's course. It did, far more than expected, and measurements of how much it changed direction can be used to calculate a larger crash if a dangerous asteroid should threaten to hit Earth—provided it's detected while still far away.

Two weeks ago, NASA and partner space agencies in Europe, Japan, and Canada launched the first Artemis mission using the new Space Launch System (SLS) rocket, the most powerful ever built, with an unmanned Orion spacecraft and ten small lunar science satellites aboard. Orion is currently circling the Moon looking for future landing sites before returning to a Pacific splashdown. Ultimately, a series of Artemis missions will build the Lunar Gateway space station in lunar orbit from which to send manned and robotic vehicles to the Moon's surface and establish a permanent manned base camp to facilitate future manned missions to Mars.

Speaking of Mars, NASA's *Curiosity* rover that landed there in 2012 is still exploring, nine years longer than its engineers expected. It has been searching for signs of past or present life and water and studying the Martian environment including geology, weather, humidity, and radioactivity.



CONTINUED ON PAGE 2

Looking Back

By Rudy Padilla

For the last summer we lived on a small farm, off highway 32 close to the Wyandotte county line, my father decided he would grow wheat. For years before no one had tried to grow wheat there, but he wanted to have a wheat crop. Then in late summer, large trucks showed up along with a wheat combine – it was harvest time.

It was not a large crop, but dad was very proud of all the activity involved in the harvest. My older brothers were all away from home, working on jobs, so they could not be present. Dad wanted me to be with him to enjoy the moment. So after several truckloads of wheat had been loaded and driven on the way to a grain company in Bonner Springs, the last truck was ready to leave our farm.

Dad asked them to hold up, so I could see what the wonders of soil could produce. He then helped me to climb up the bed of the truck and look at the golden grain inside. I was able to scoop up a hand full of

wheat kernels in my hand. It was a thrilling feeling to see the beautiful color and the aroma of freshly harvested wheat. I then climbed down from the side of the large truck, and then the truck was off to unload. The wheat harvest was finished for us. By June of the following year, we would be moving from the farm, but I still hold onto the many good memories of living there.

Dad then asked me to go with him to shop, so we could celebrate. Soon we were pulling onto highway 32 and heading east. We caught up for a short time behind the truck that had just left our farm. The truck would go farther east, and we turned to stop at a small grocery store. I remember how happy I was to be there and to see my dad so pleased



with the outcome of his wheat crop. When my dad was happy, all around him knew it. He really was a proud and good man. I always thought of him as someone that I wanted to be like. I even made it known then that I wanted to be a farmer. But

that was not to be.

When we arrived home about 5 p.m. – we all celebrated, including my many sisters. There was plenty of candy and potato chips – and Vess cola – all around. That wheat field gave us hope, then it was delivered.

Speaker Tells of Historic Preservation Efforts

By Murrel Bland

Randy Greeves, a recently appointed Historic Preservation Officer for the Unified Government, was the speaker at the Annual Meeting of the Wyandotte County Historical Society Sunday, Nov. 20 at the Wyandotte County Museum. About forty persons attended.

Greeves explained that the Na-

tional Historic Preservation Act of 1966 sets federal policy for the preservation of our heritage. The law allows federal, state and local governments to operate and cooperate in historic preservation efforts.

Greeves told about the Downtown Historic Commercial District and Downtown and nearby Historic Churches. The boundaries of the



Randy Greeves

Commercial District are Sixth Street on the East, Tenth Street on the West, Nebraska Avenue on the North and Tauroomee Avenue on the South.

Greeves also told of the standards used in determining historic standards. It must have physical integrity, determine who was there, how skilled was the workmanship and what were the surroundings like.

Greeves said various state and federal grants and tax credits are

Haas...

Mars rover *Perseverance* landed in early 2021 and is studying water sources, oxygen production from the planet's thin atmosphere, and other habitability issues to prepare for future human missions. *Perseverance* also carried a small helicopter, *Ingenuity*, that made the first powered flight on another planet and has flown successfully more than 30 times, flights the Wright brothers never imagined.

On November 10, NASA deployed from a rocket in space a large inflatable heat shield—yes, *inflatable!*—that re-entered

the atmosphere at 18,000 mph before plunging gently under parachutes into the Pacific. Recovered by ship, NASA says electronic components behind the shield survived intact. Compact inflatable shield technology could be suitable for heavy payloads and manned missions to Mars.

For me, these wonderful achievements help balance out the not wonderful return to Standard Time and the inevitable coming of winter. I'm on the countdown to longer days and warmer weather, made tolerable by the continued success of KU men's basketball.



The Record
Publications, LLC

Publishers of *The Record*

(913) 362-1988

Jon A. Males

Owner/Publisher/Editor

Policy On Opinion

All statements of implication or opinions contained in editorial, columnist, or advertising materials in this publication represent only the view of the author or advertiser.

The Record (USPS No. 002269) is published weekly every Thursday by The Record Publications at 14690 Parallel Rd, Basehor KS 66007. Newsstand price, single copy, 35 cents; subscription price per year, \$16.13. For editorial, display, and classified advertising information call 362-1988. Periodical postage paid at Kansas City, Kansas 66110. Postmaster: Send address changes to The Record, P.O. Box 6197, Kansas City, Kansas 66106-0197

© 2022 by The Record Publications, LLC. Kansas City, Kansas. All rights reserved. No part of this publication may be reproduced in any form or by any means without expressed written consent from the publisher.

CONTINUED ON PAGE 7



By Sharon Hoover

Comin' & Goin' Turner Style

but you need to register in advance. The completely new holiday light displays features 60 huge character scenes including Santa Claus, Snow globes, Nutcrackers, etc.

The WYCO Parks & Rec is also sponsoring "Donuts with Santa" on December 10 from 9am -12pm at Memorial Hall, 600 N 7th St. There will be face painting, inflatables, holiday crafts, hot chocolate and donuts and a picture with Santa (while supplies last).

Bundle up for a "Movie With Santa" hosted by Turner Recreation Commission on December 16 at Swartz Field (5142 Swartz Rd.). Take a picture with Santa, enjoy hot chocolate, cookies, and popcorn. A mailbox will be ready to receive those letters to Santa that haven't yet been sent. A couple of heaters will be available but be sure to bring

blankets & wear warm clothing to enjoy the movie.

Turner Recreation is holding the Elder Bearies Christmas Potluck on Wednesday, December 14, at noon in the Bear's Den. Bring a dish to share with family and friends, A special musical program will be performed by the Turner Sixth Grade Academy Choir. 831 S. 55th St.

A couple of weeks ago I talked about my Thanksgiving Cactus and now I have a picture to share. Also, the last K-State Garden Hour for 2022 is December 7 from 12pm-1pm and the topic is "Accessible Gardening for All". Gardening is a passion for many, but due to physical challenges find themselves limited or unable to garden. Join Calla Edwards, Butler County Horticulture Agent to learn tips, tricks, and ways to make gardening experience adaptable for



everyone. If you've missed any of the presentations, they are available on the K-State gardening YouTube.

I just finished reading John Grisham's latest novel "The Boys from Biloxi". Some may call it fiction; I call it historical fiction. The book would make a great Christmas gift for someone who enjoys his books. I had a hard time putting it down.

Until next time stay safe and be kind to those around you. Continue to pray for the brave Ukrainians fighting for the right to remain free.

Now that Thanksgiving is over, it's time to start thinking about Christmas. Locally, several family friendly events are scheduled. The WYCO Parks & Recreation Dept of the Unified Government is sponsoring the Holiday Magic Drive-thru at Wyandotte County Park now through January 1. The event is free,



**FREE
Safety
Deposit Box
for a year
with new
account opened***

**while supplies last*



ARGENTINE FEDERAL SAVINGS
We Care!

CALL US TODAY
913-831-2004 or
913-402-1500

3004 Strong Avenue, Kansas City, Kansas
12501 Antioch Road, Overland Park, Kansas
And Online at ArgentineFed.com



UG Partners with Community Services Agencies to Provide Cold Weather Shelter Beds in Extreme Weather

Kansas City, KS – The Unified Government of Wyandotte County and Kansas City, Kansas (UG) has partnered again with Cross-Lines Community Outreach this year to manage and operate the temporary Severe Cold Weather Overnight Shelter beginning in mid-December 2022 through March 31, 2023.

This year the overnight shelter will be located at 550 State Ave, Kansas City, KS 66102. It will be available to those in need on nights when the temperature is 25 degrees Fahrenheit or below. Shelter operations will start from 4:30 p.m. to

9:00 a.m. the following day. Guests will be allowed to be onsite from 6:00 p.m. – 7:00 a.m. The expected maximum capacity of the shelter will be 35 people and available beds will be first come, first served.

“We are called, through our values of caring and commitment to community, to protect the unhoused,” said Mayor Tyrone A. Garner. “Opening this winter’s overnight shelter will provide a safe and warm refuge during the difficult winter months.”

“We appreciate the collaborative efforts of UG staff and Community

Partners in protecting the unhoused,” said Assistant County Administrator Alan Howze. “Opening the Severe Cold Weather Shelter will save lives and to protect the most vulnerable in our community.

Cross-Lines staff, and a variety of community partner organizations, will provide a variety of support services, meals, and assistance to get clients into permanent housing.

The Shelter will be partially funded by Emergency Solutions Grant CARES ACT funding that was awarded to the City of Kansas City,



KS in 2020.

Determination whether the shelter will be open for the evening will be made by 8am each day, and the information will be available by calling 913-214-1104.

In addition to the overnight shelter, there are multiple warming centers in the Kansas City, Kansas area.

CROSS-LINES RETIREMENT CENTER, Inc.

NOW ACCEPTING APPLICATIONS

UNDER NEW MANAGEMENT

ALL UTILITIES PROVIDED

SEVERAL FLOORPLANS TO CHOOSE FROM

Huge Master Suites Available

- 2 Bathrooms — 1 walk-in shower and 1 shower/tub combo
- Extremely Large bedroom

\$580 per month (effective June 1, 2019)

1 Bedroom Units Available

- Laundry rooms available on-site
- Huge Parking Lots
- Doctors near by
- Banks nearby
- Exercise Room
- Craft Room
- Library Next Door

\$443 per month (effective June 1, 2019)

Studios Available at \$377 (effective June 1, 2019)

Call for an appointment to tour the property today!!

Cross-Lines Retirement Center, Inc.

3030/3100 Powell Ave.

Kansas City, Kansas 66106

913-789-0855

Xlines3030@gmail.com

Young Management Corporation and this Property do not discriminate on the basis of disability status in the admission or access to, or treatment or employment in, its federally assisted programs and activities.

The person named below has been designated to coordinate compliance with the nondiscrimination requirements contained in the Department of Housing and Urban Development’s regulations implementing Section 504 (24 CFR, part 8 dated June 2, 1988).

Linda I. Kemp, Property Supervisor

Young Management Corporation

22602 State Line Road

Bucyrus, KS 66013

913-947-3131 - 913-341-2428 (direct) TTY:711



YOU are invited

Anyone who believes in the mission of The League of United Latin American Citizens LULAC is eligible to join us. Being part of the conversation will bring us together with all of society.

Wikipedia:

The League of United Latin American Citizens (LULAC) is the largest and oldest Hispanic and Latino civil rights organization in the United States.[2] It was established on February 17, 1929, in Corpus Christi, Texas, largely by Hispanics returning from World War I who sought to end ethnic discrimination against Latinos in the United States. The goal of LULAC is to advance the economic condition, educational attainment, political influence, housing, health, and civil rights of Hispanic people in the United States. LULAC uses nationwide councils and group community organizations to achieve all these goals. LULAC has about 132,000 members in the United States.

Council 11085 has LULAC members in the counties of Douglas, Johnson and Wyandotte (Kansas) – Clay and Jackson (Missouri).

Join us in monthly Zoom meetings – the second Tuesday of each month at 7 p.m.

Rudy Padilla Email opkansas@swbell.net

Candice Cruz Email CandiceCruz1016@Gmail.Com

Your Hometown Business Directory

"AT YOUR SERVICE"

CHILD CARE/DAY CARE

EL CENTRO ACADEMY FOR CHILDREN
Ages 2 1/2 to Preschool - all day
1330 S 30th, Kansas City KS 913.677.1115

FINANCIAL

ARGENTINE FEDERAL SAVINGS
Deposits Federally Insured
3004 Strong Ave.831-2004

HEALTH CARE

EAST ARGENTINE NURSING SERVICE
Clinic Tu/Th 3:00-5:30 p.m.
14th & Metropolitan

CHURCHES

USHINDI UNITED METHODIST CHURCH
Sunday Service 9:30 am
3730 Metropolitan Ave.831-4531

FUNERAL SERVICES



MAPLE HILL
FUNERAL HOME
CEMETERY
Family Owned Since 1945
**Complete Funeral, Cemetery,
Cremation & Pre-arranged Services**
3300 Shawnee Dr.
Kansas City, KS 66106
Funeral Home Cemetery
(913) 831-3345 (913) 262-6610
www.maplehillfuneralhome.com

PET CARE/GROOMING

BUBBLES & BOWS BOUTIQUE
2500 S 34TH ST 722-0177 or 406-2379
Grooming • Training • Boarding • Apparel

PLUMBING HEATING/COOLING

SCHULER HEATING/COOLING, LNC.
Visit our showroom & parts dept.
3400 Shawnee Dr.262-2969

RESTAURANT

BIG 'Q' BAR-B-Q
Wed. & Sunday Special
2117 S. 34th Street362-6980

Health Care And Community Prevention Centers

VIBRANT HEALTH
Argentine location:
1428 S. 32nd St.
Monday - Friday, 8-5 pm
All locations phone,
913*342*2552

Partnership for Drug-Free Kids
855*378*4373

National Suicide Prevention Lifeline
800*273*8255

KC Care Health Center
816*753*5144

Senior-focused Health Care,
Partners in Primary Care
Medicare-Advantage Care
Center
7527 State Ave.
913*355*6986

ATTENTION LANDLORDS:

Shelter Insurance has competitive rates for rental properties in Missouri or Kansas.

Call today: Sam Davis

913-649-3399



Sam Davis
Agency, LLC
6917 W 76th St
Overland Park, KS



I'm Just Goofy Over The Record!



Have *The Record* delivered to your mailbox each and every week with a 1-, 2- or 3-year subscription.

**Take it from me,
a *Record* subscription just makes
perfect sense!**

Turner, Argentine & Rosedale community news... relax, we've got it in *The Record*!

- ◆ News and Features on local people and places – information that hits home to YOU and your community.
- ◆ Community Events – dates, times & locations... news you can use.
- ◆ Area Schools – sports, activities and issues that affect parents, students and the community.

RECORD SUBSCRIPTION FORM

Name _____

Address _____

City _____

State _____ ZIP _____

Home Phone _____

Daytime Phone _____

CHECK A SUBSCRIPTION LENGTH

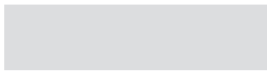
1-Year Subscription \$15.00

2-Year Subscription \$28.50

3-Year Subscription 42.00

--- CARD NUMBER ---

EXP. DATE ____/____/____



Name as it appears on card _____

Signature _____

Please make checks payable to: The Record

Mail to: The Record
PO Box 6197
Kansas City, KS 66106

National Older Driver Safety Week December 5-9

For most of us, driving represents freedom, control, and competence.

Driving lets us go to the places we want or need to go. For many of us—even as we get older—driving is important economically. We drive to get to and from work, and sometimes as part of our jobs.

Driving is important socially; it lets us stay connected to our communities and favorite activities.

Driving appears to be relatively easy, but in fact it is a complex skill. Our ability to drive safely is affected by changes in our physical and mental conditions.

Many of these changes take place as we get older, though in different ways and at different times.

Research shows that age is not the sole predictor of driving ability and safety. But there is ample evidence to show that most of us experience age-related declines in our physical and mental abilities—declines that can signal a greater crash risk.

Between 2011 and 2020, the U.S. population of people 65 and older increased by 35%.

In 2020, there were 6,549 people 65 and older killed in traffic crashes in the United States, accounting for 17 percent of all traffic fatalities.

Older female drivers accounted for 20% of all female driver fatalities in 2020, compared with 16% for the older-male-driver fatalities.

In 2020, most traffic fatalities in crashes involving older driv-

ers occurred during the daytime (72%), on weekdays (69%), and involved other vehicles (66%).

Older Driver Warning Signs

- Has close calls or is in minor crashes on the road
- Fails to use the turn signal
- Unintentionally drifts into other lanes
- Has difficulty paying attention to driving
- Drives on the wrong side of road
- Misses turns or stop signs
- Confuses gas and brake pedals
- Gets lost more often

IF YOU'RE AN OLDER DRIVER: TIPS TO DRIVE SAFELY WHILE AGING GRACEFULLY

Decisions about your ability to drive should never be based on age alone. However, changes in vision, physical fitness and reflexes may cause safety concerns. By accurately assessing age-related changes, you can adjust your driving habits to remain safe on the road or choose other kinds of transportation.

If you've noticed changes in your vision, physical fitness, attention, and ability to quickly react to sudden changes, it's important to understand how these changes may be affecting your ability to drive safely. Driving Safely While Aging Gracefully is a resource developed by the USAA Educational Foundation, AARP and NHTSA to help you recognize warning signs and pick up useful tips on what you can do to remain a safe driver.

One way to stay safe while driving is by making sure you understand how medical conditions can impact your ability to drive safely. Another way is by adapting your motor vehicle to make sure it fits you properly, as well as choosing appropriate features, installing and knowing how to use adaptive devices, and practicing good vehicle maintenance.

IF YOU'RE A FAMILY CAREGIVER: TALKING ABOUT DRIVING WITH AN OLDER DRIVER

Talking with an older person about their driving is often difficult. Most of us delay that talk until the person's driving has become what we believe to be dangerous. At that point, conversations can be tense and awkward

for everyone involved. But there are things you can say and do to make those conversations more productive and less tense.

Learning How to Understand and Influence Older Drivers? will help you support an older driver's needs, as well as find community resources that can help put your older-driver plan into action. If you have decided to initiate a conversation with an older loved one about driving safely, take these three steps:

1. Collect information;
2. Develop a plan of action; and
3. Follow through on the plan.

You might also want to consider learning how to adapt a motor vehicle to accommodate the unique needs of an older driver and discussing it with your loved one.

LEGAL PUBLICATION

LEGAL PUBLICATION

Request for Proposal Advertisement

Turner Unified School District No. 202 is seeking Bid Proposals for Water Source Heat Pump Replacements and Dedicated Outside Air Unit Replacements at Turner High School.

Documents pertaining to this Request for Proposal will be provided to any qualified contractor free of charge by email request sent to crockettc@turnerusd202.org

Turner USD 202 Facility Supervisor, Chris Crockett will host the blind bid opening December 20, 2022 at 1:00 pm. The location of the bid opening will be the Facility and Grounds Building located at 5800 Metropolitan, Kansas City, KS 66106. Turner USD 202 will announce the vendor that is awarded the bid Wednesday January 18, 2022.

(First published 11-24-22)
2t-The Record-12-1-22

Request for Proposal Advertisement

Turner Unified School District No. 202 is seeking Bid Proposals for the replacement of the water main and fire main at Turner High School including the replacement of Parking Lot Lighting on the South side of the building.

Documents pertaining to this Request for Proposal will be provided to any qualified contractor free of charge by email request sent to crockettc@turnerusd202.org

Turner USD 202 Facility Supervisor, Chris Crockett will host the blind bid opening December 20, 2022 at 1:30 pm. The location of the bid opening will be the Facility and Grounds Building located at 5800 Metropolitan, Kansas City, KS 66106. Turner USD 202 will announce the vendor that is awarded the bid Wednesday January 18, 2022.

(First published 11-24-22)
2t-The Record-12-1-22

Preservation...

...from page 2

available to rehabilitate historic structures.

Society President Bill Hutton presented the Annual Awards for the Society. They included Roger Guess and Dean Bridge, The Garland M. Smith Award; Mary Lew, Volunteer of the Year; the Baric

Brothers musical group, the Margaret Landis Award for Regional Historical Preservation; St. John's Catholic Club, the V.J. Lane-Organizational Recognition Award; and Special President's Awards, Margaret Long and Murrel Bland.

The Society elected three Trustees to serve three-year terms. They are George Groneman, Elnora Jefferson and Brett Lovett.



Periodical Postage Paid
at Kansas City, Kansas

CARING CONNECTION COLLABORATIVE



CLOTHING & FOOD:

- Clothing; children & adults
- Food
- Miscellaneous items

LOCATION:

First Baptist Church of
Turner
701 s. 55th St. KCKS 66106
Call 913-287-7756

By appointment M, W, Thur.
Walk-in Saturdays 1-3pm